

# HD-SDI

*HD-SDI Real-time DVR with  
1080p Real-time recording*



*Combination with HD Indoor Dome Camera and HD Mini Bullet Camera*

Normal type



IR type



Web client



CMS



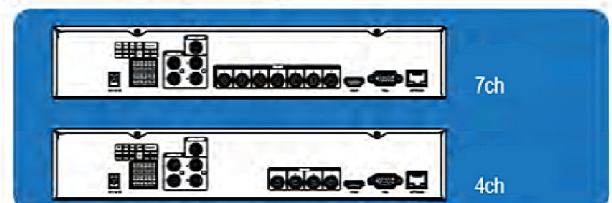
MOBILE VIEWER



## FEATURES

- H.264 Compression (Main profile)
- 4 / 7ch HD-SDI Video Input (720p or 1080p)
- HD Real-time (Max 30fps per channel) Recording & Playback
- HDMI & VGA Output Full HD (Max. 1,920x1,080p)
- 4ch Audio In & 1ch Audio out
- Multi-channel Display & Digital zoom in monitoring
- Display channel switch on screen
- Mobile Device
- User Friendly GUI: Flexible, Easy and convenient
- Advanced CMS software: Convenient and Versatile software
- Dual Stream: Optimize network transfer speed
- S.M.A.R.T: Self Monitoring Analysis and Reporting Technology
- 2 HDD (Up to max 6TB) -3TBx2
- CMS Up to 64channel Display in a Tab (Up to max 4 Tab)
- Support Web viewing through IE

## REAR



## HD-SDI Real-time DVR with 1080p Real-time recording



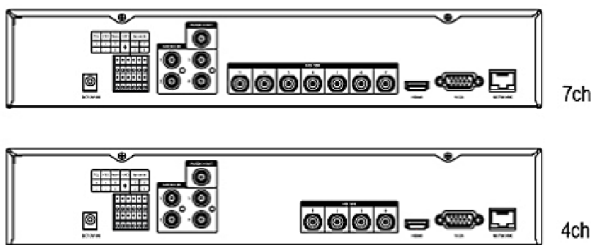
## SPECIFICATIONS

Video	Camera Input(NTSC,PAL)	HD-SDI 4ch		HD-SDI 7ch
	Output	1HDMI, 1VGA		
Audio	Audio Input	4 RCA		
	Output	1 RCA		
Display	Split Display	1/4	1/4/7	
	HDMI Resolution	1080p or 1080i		
	VGA Resolution	From 1024*768 up to 1920*1080		
Recording	Compression(Video / Audio)	H.264 / ADPCM		
	Resolution(Pixel)	1080P(1920*1080), 720P(1280*720)		
	Mode	Normal, Event(Alarm, Motion), Schedule		
	Max Recording Frame	120fps@1080P	210fps@1080P	
Playback	Split Display	1, 4	1, 4, 7	
	Max Playback Frame	30fps@1080P		
	Search Mode	Date & Time, Calendar, Event(Alarm, Motion, Audio), Bookmark		
	Mode	Play, REW & FF, Slow, Frame to Frame, Pause, Replay		
Network	Network Interface	10/ 100/ 1000 Mbps Ethernet(RJ-45)		
	Protocol	TCP/IP, SMTP, HTTP, DHCP, PPPOE(ADSL), RTP/ RTSP		
	Serial Communicaton	RS-485 Serial Port X2 (PTZ & Keyboard control)		
	Application(PC Client)	Windows2000 / XP / Windows Vista		
	Web Browser	Internet Explorer 5.0 Higher(DVRs Control or Viewing)		
	Event Transport	E-mail notification when Event Occurs		
	Viewing / User Access	Remote Client, CMS, Mobile Viewer / Up to 25 users		
	Storage & Backup	Storage Device	2 internal HDDs (up to 6TB)	
Backup Interface		USB 2.0x2ea, Via Network		
Backup Device		External HDD, Memory Stick		
Backup File Fomat		EXE, AVI(Video Clip)		
Alarm	Sensor input	4(TTL)		
	Relay output	1 Relay		
Control	Event Log	Up to the 5000 events (Alarm, Motion, Video&Power Loss,Power&Record On/Off)		
	Controller	IR Remote Control/Mouse		
	Pan/Tilt Camera	Control From RS485 Interface/ Via Network		
Others	PTZ Protocol	12models including Pelco-P, Pelco-D, Vista-PD,Samsung and LG		
	Operating System	Embedded Linux		
	Power Source	DC 12V/ 3.5A		
	Power Consumption	40W		
	Weight	Unit/ Box	3.0Kg / 4.0Kg	
	Dimension	Unit/ Box	350(W)*250(D)*72(H)mm / 400(W)*340(D)*150(H)mm	

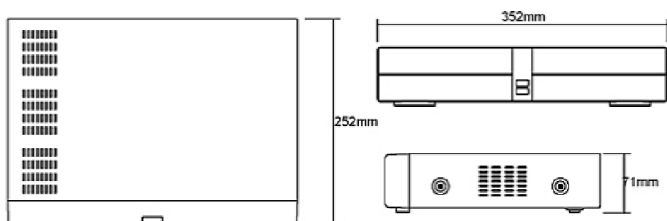
## FEATURES

- H.264 Compression (Main profile)
- 4 / 7ch HD-SDI Video Input (720p or 1080p)
- HD Real-time (Max 30fps per channel) Recording & Playback
- HDMI & VGA Output Full HD (Max. 1,920x1,080p)
- 4ch Audio In & 1ch Audio out
- Multi-channel Display & Digital zoom in monitoring
- Display channel switch on screen
- Mobile Device
- User Friendly GUI: Flexible, Easy and convenient
- Advanced CMS software: Convenient and Versatile software
- Dual Stream: Optimize network transfer speed
- S.M.A.R.T: Self Monitoring Analysis and Reporting Technology
- 2 HDD (Up to max 6TB) -3TBx2
- CMS Up to 64channel Display in a Tab (Up to max 4 Tab)
- Support Web viewing through IE

## Rear



## DIMENSIONS

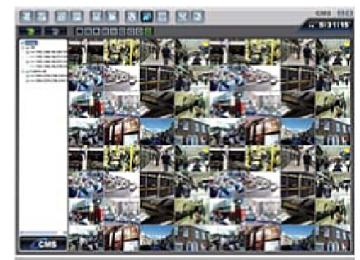


Unit : mm

### < Web client >



### < CMS >



### < Mobile viewer >

